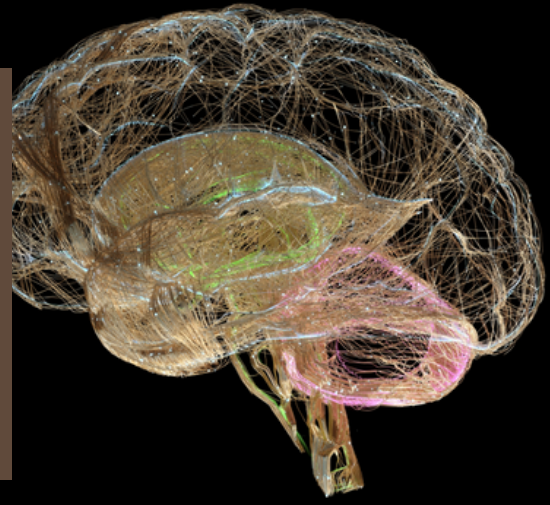


Learning Partnership Presents:

Reflective Practice Part I

Trainings are Free!!



Course Description:

This workshop is designed for providers of all disciplines and roles who work with individuals and families across the lifespan, including those working with infants and children of all ages, and their parents. The training focuses on reflective practice as a strategy for enhancing skills, understanding our reactions and responses when working with others, and examining the emotional content of our experiences in ways that can reduce work stress, and improve our sense of professional competence and well-being. The goal of continuous professional transformation through personal awareness and incorporation of new knowledge into practice is the primary theme throughout the day. The basics of neurobiology will be covered with a special focus on how to achieve the neurobiological state necessary for quality reflective work. Simple ways to expand reflective activities will be discussed, and the relationship between our own reflective capacities and our ability to support others in their reflective work, through the parallel process, will be explored.

Learning Objectives:

Participants will be able to:

1. Explain the difference between a "reaction" and a "response" and the stress response systems' role in both
2. List the 4 functional levels of the brain as they relate to the stress response systems
3. Explain the difference between Implementation Science and Translational Science
4. When reflecting with a group, explain the 3 elements of Perry's Sequence of Engagement
5. When reflecting, describe the 2 parts of the functional brain that are needed to support quality reflection.

Training Information

Register online at <http://scclearn.sccgov.org/>

Accommodation

If you need an accommodation to attend this training, please email us at LPTtraining@hhs.sccgov.org.

Continuing Education (CE) Certificates

CE Certificates are available to download in sccLearn 2-3 weeks after the training date.

Registration & Cancellation

Registration and cancellation close at 9am two working days prior to training. You will be recorded as a No-Show in sccLearn if you don't attend and did not cancel the training.

Accommodations / Grievance

If you have a questions, need accommodations, or have a grievance, please contact LPTtraining@hhs.sccgov.org.

Target Audience: County of Santa Clara's Behavioral Health Services and Contract Provider Staff

Dr. Kristie Brandt, is Director of the Parent-Infant & Child Institute in Napa, CA and an Assistant Clinical Professor of Pediatrics VF at U.C. Davis School of Medicine. She is a Child Trauma Academy Teaching Fellow with Dr. Bruce Perry in Houston, TX and faculty with the Brazelton Institute at Children's Hospital, Boston where she provides training in the Newborn Behavioral Assessment Scale. With Dr. Ed Tronick, Director of the Child Development Unit of Boston Children's Hospital, she co-developed and now directs the University of Massachusetts Boston Infant-Parent Mental Health Post-Graduate Certificate Program in Napa, CA, a national award winning 15-month training program for professionals.

Continuing Education Information

County of Santa Clara Behavioral Health Services Department (CSCBHSD) is approved by the CA Association of Marriage and Family Therapist (CAMFT) to sponsor continuing education for the County of Santa Clara's LMFTs, LCSWs, LPCCs, and/or LEPs. CSCBHSD maintains responsibility for the program/course and its content. This course meets the qualifications for 5.5 hours of continuing education credit for LMFTs, LCSWs, LPCCs and/or LEPs, as required by the CA Board of Behavioral Sciences (BBS). CAMFT is the BBS recognized approved agency-Provider #131775. CSCBHSD is approved by California Consortium of Addiction Programs and Professionals - Educational Institute (CCAPP-EI) Provider number 4S-95-305-0425 for 5.5 CEHs. Lunch and scheduled breaks during the training do not count towards continuing education credit.

December 12, 2023

9:00 - 4:00 pm

Virtual Training - Zoom

Zoom link will be emailed to registrants 2 business days before the training.

Post-test will be available immediately after the training.

CE Certificates will be available to download in sccLearn 2-3 weeks after training

Training Website: www.sccbhsd.org/training